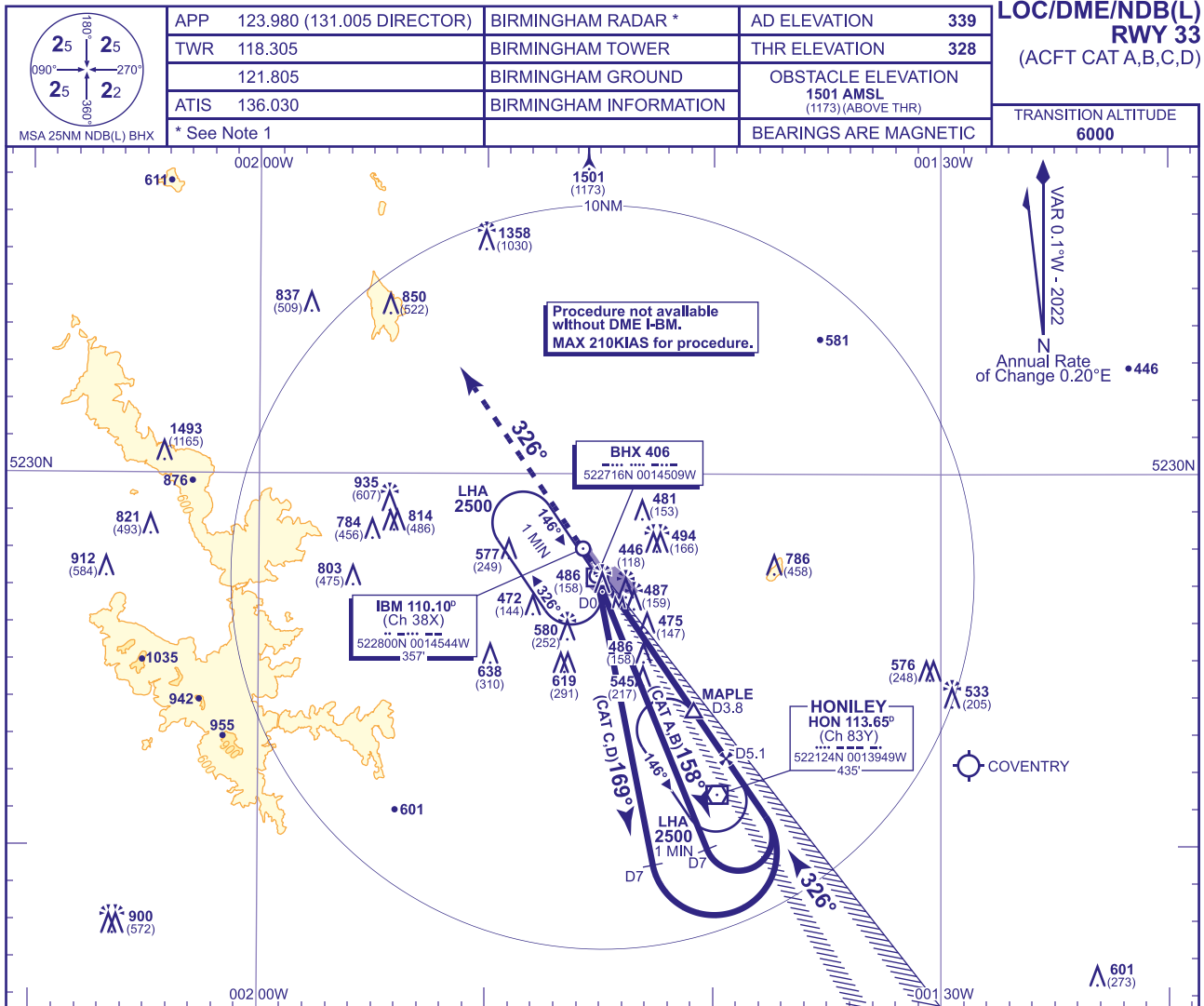
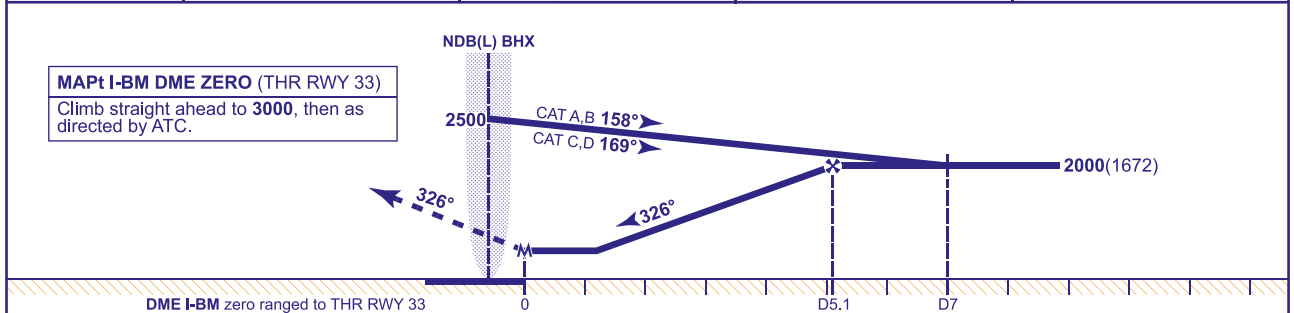


**BIRMINGHAM**  
**LOC/DME/NDB(L)**  
**RWY 33**  
(ACFT CAT A,B,C,D)



RECOMMENDED PROFILE Gradient 5.24%, 320FT/NM				
DME I-BM	5	4	3	2
ALT(HGT)	1970(1642)	1660(1332)	1340(1012)	1020(692)



Aircraft Category		A	B	C	D	Rate of descent	G/S KT	160	140	120	100	80
OCA (OCH)	Procedure	740(412)	740(412)	740(412)	740(412)		FT/MIN	850	740	640	530	420
VM(C)OCA (OCH AAL)	Total Area	810(471)	920(581)	1080(741)	1410(1071)							

**ALTERNATIVE PROCEDURE FROM EXTENDED MAPLE HOLD**  
Overhead MAPLE at **2500**. Extend the outbound leg of the MAPLE holding pattern to **2000**(1672). At I-BM DME 7 turn left onto LOC. When established continue as for main procedure.

**NOTE 1** In the event of a radar failure, BIRMINGHAM APPROACH callsign should be used on 123.980 or 131.005.

**CHANGE (7/24):** VM(C) OCA (OCH AAL) CAT D REVISED. SPECIFICATION CHANGE.

AERO INFO DATE 22 APR 24

AD 2-EGBB-8-6